

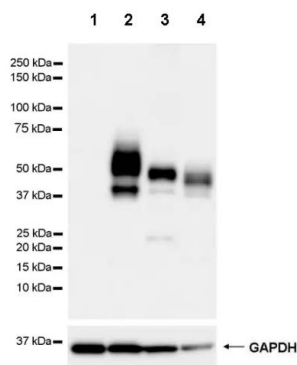
# PD-L1 (CD274) Monoclonal Antibody

## Product Details

Size	50ul/100ul
Species Reactivity	Human, Mouse
Application	IHC-P, ICC/IF, WB
Host/Isotype	Rat / IgG2a, lambda
Class	Monoclonal
Type	Antibody
Clone	CAL10
Conjugate	Unconjugated
Form	Liquid
Concentration	1 mg/mL
Purification	Affinity chromatography
Storage buffer	PBS, pH 7.2
Contains	0.09% sodium azide
Storage conditions	Store at 4°C short term. For long term storage, store at -20°C, avoiding freeze/thaw cycles.

Applications	Tested Dilution	Publications
Western Blot (WB)	1:500-2000	-
Immunohistochemistry (IHC)	-	-
Immunohistochemistry (Frozen) (IHC (F))	Assay-Dependent	-
Immunocytochemistry (ICC/IF)	1:50-200	-

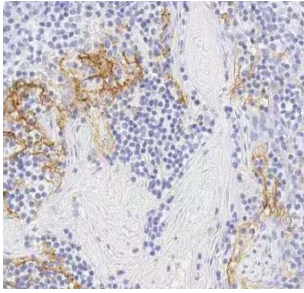
## Product Images For PD-L1 (CD274) Monoclonal Antibody



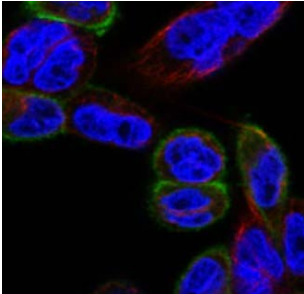
Anti-PD-L1 antibody – Rat IgG2a (RA1159) at 1/1000 dilution

Lane 1 : CHO-S (Chinese hamster ovary epithelial cell) whole cell lysate  
 Lane 2 : CHO-PD-L1 (PD-L1 stably expressed Chinese hamster ovary epithelial cell) whole cell lysate  
 Lane 3 : Human placenta tissue lysate  
 Lane 4 : NCI-H1299 (human lung carcinoma epithelial cell), whole cell lysate

Lysates/proteins at 20 µg per lane.



Immunohistochemistry (Formalin/PFA-fixed paraffin-embedded sections) - Anti-PD-L1 antibody – Rat IgG2a (RA1159)  
IHC image of PD-L1 staining in a section of formalin-fixed paraffin-embedded normal human tonsil\* performed on a Leica BOND™ system using the standard protocol F.



Immunocytochemical analysis of 4% paraformaldehyde-fixed, 0.1% Triton X-100-fixed permeabilized CHO-PD-L1 cells labeling PD-L1 with RA1159 at 1/100 dilution

---

For Research Use Only. Not for use in diagnostic procedures. Not for resale without express authorization. Products are warranted to operate or perform substantially in conformance with published Product specifications in effect at the time of sale, as set forth in the Production documentation, specifications and/or accompanying package inserts ("Documentation"). No claim of suitability for use in applications regulated by FDA is made. The warranty provided herein is valid only when used by properly trained individuals. Unless otherwise stated in the Documentation, this warranty is limited to one year from date of shipment when the Product is subjected to normal, proper and intended usage. This warranty does not extend to anyone other than the Buyer. Any model or sample furnished to Buyer is merely illustrative of the general type and quality of goods and does not represent that any Product will conform to such model or sample. NO OTHER WARRANTIES, EXPRESS OR IMPLIED, ARE GRANTED INCLUDING WITHOUT LIMITATION, IMPLIED WARRANTIES OF MERCHANTABILITY, FITNESS FOR ANY PARTICULAR PURPOSE, OR NON-INFRINGEMENT. BUYER'S EXCLUSIVE REMEDY FOR NON-CONFORMING PRODUCTS DURING THE WARRANTY PERIOD IS LIMITED TO REPAIR, REPLACEMENT OF OR REFUND FOR THE NON-CONFORMING PRODUCT(S) AT SELLER'S SOLE OPTION. THERE IS NO OBLIGATION TO REPAIR, REPLACE OR REFUND FOR PRODUCTS AS THE RESULT OF (I) ACCIDENT, DISASTER OR EVENT OF FORCE MAJEURE, (II) MISUSE, FAULT OR NEGLIGENCE OF OR BY BUYER, (III) USE OF THE PRODUCTS IN A MANNER FOR WHICH THEY WERE NOT DESIGNED, OR (IV) IMPROPER STORAGE AND HANDLING OF THE PRODUCTS. Unless otherwise expressly stated on the Product or in the documentation accompanying the Product, the Product is intended for research only and is not to be used for any other purpose, including without limitation, unauthorized commercial uses, in vitro diagnostic uses, ex vivo or in vivo therapeutic uses, or any type of consumption by or application to human or animals.