

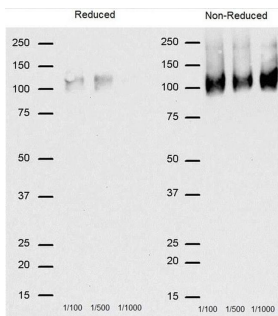
# CD68 Monoclonal Antibody (FA-11)

## Product Details

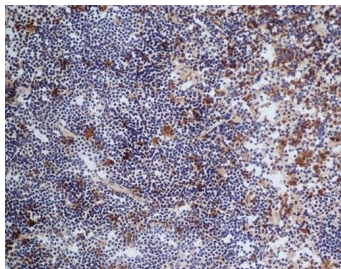
Size	50ul/100ul
Species Reactivity	Mouse
Published Species	Mouse, Human
Host/Isotype	Rat / IgG2a
Class	Monoclonal
Type	Antibody
Clone	FA-11
Conjugate	Unconjugated
Immunogen	purified Con A acceptor glycoprotein from P815 cell line
Form	Liquid
Concentration	1 mg/mL
Purification	Protein G
Storage buffer	PBS
Contains	0.09% sodium azide
Storage conditions	4°C or -20°C if preferred

Applications	Tested Dilution	Publications
Western Blot (WB)	Assay-dependent	-
Immunohistochemistry (Paraffin) (IHC (P))	Assay-dependent	-
Immunocytochemistry (ICC/IF)	Assay-dependent	-
Flow Cytometry (Flow)	1:50-1:100	-

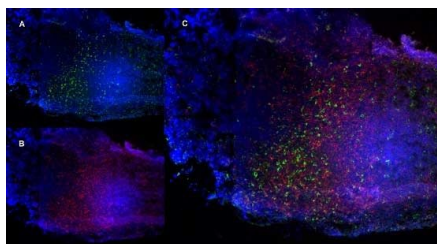
## Product Images For CD68 Monoclonal Antibody (FA-11)



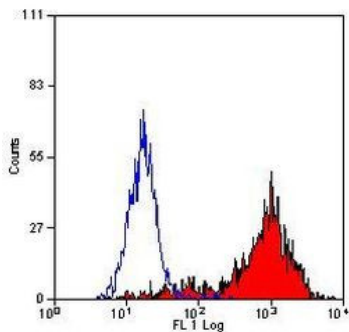
Western blot analysis of CD68 expression on J774 cells using a CD68/gp110 monoclonal antibody (Product # RA1155) and detected with Goat a Rat IgG, HRP conjugated secondary antibody



Immunohistochemical staining of mouse spleen cryosection with CD68/gp110 Antibody (Product # RA1155) followed by Goat anti Rat IgG, HRP conjugated secondary showing Immunohistochemical staining of macrophages in the red pulp



Immunofluorescence: Mouse lymph node cryosection stained with RA1155 anti-CD68 antibody [FA-11], green in A and Rat anti Mouse CD8 antibody, clone YTS105.18, red in B. C is the merged image with nuclei counterstained blue using DAPI. (Low power).



Flow cytometric analysis of mouse peritoneal macrophages cells using a CD68 /gp110 monoclonal antibody (Product # RA1155)

For Research Use Only. Not for use in diagnostic procedures. Not for resale without express authorization. Products are warranted to operate or perform substantially in conformance with published Product specifications in effect at the time of sale, as set forth in the Production documentation, specifications and/or accompanying package inserts ("Documentation"). No claim of suitability for use in applications regulated by FDA is made. The warranty provided herein is valid only when used by properly trained individuals. Unless otherwise stated in the Documentation, this warranty is limited to one year from date of shipment when the Product is subjected to normal, proper and intended usage. This warranty does not extend to anyone other than the Buyer. Any model or sample furnished to Buyer is merely illustrative of the general type and quality of goods and does not represent that any Product will conform to such model or sample. NO OTHER WARRANTIES, EXPRESS OR IMPLIED, ARE GRANTED INCLUDING WITHOUT LIMITATION, IMPLIED WARRANTIES OF MERCHANTABILITY, FITNESS FOR ANY PARTICULAR PURPOSE, OR NON INFRINGEMENT. BUYER'S EXCLUSIVE REMEDY FOR NON-CONFORMING PRODUCTS DURING THE WARRANTY PERIOD IS LIMITED TO REPAIR, REPLACEMENT OF OR REFUND FOR THE NON-CONFORMING PRODUCT(S) AT SELLER'S SOLE OPTION. THERE IS NO OBLIGATION TO REPAIR, REPLACE OR REFUND FOR PRODUCTS AS THE RESULT OF (I) ACCIDENT, DISASTER OR EVENT OF FORCE MAJEURE, (II) MISUSE, FAULT OR NEGLIGENCE OF OR BY BUYER, (III) USE OF THE PRODUCTS IN A MANNER FOR WHICH THEY WERE NOT DESIGNED, OR (IV) IMPROPER STORAGE AND HANDLING OF THE PRODUCTS. Unless otherwise expressly stated on the Product or in the documentation accompanying the Product, the Product is intended for research only and is not to be used for any other purpose, including without limitation, unauthorized commercial uses, in vitro diagnostic uses, ex vivo or in vivo therapeutic uses, or any type of consumption by or application to human or animals.