

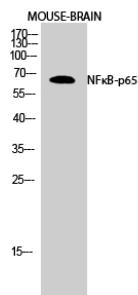
# NFkB p65 Polyclonal Antibody

## Product Details

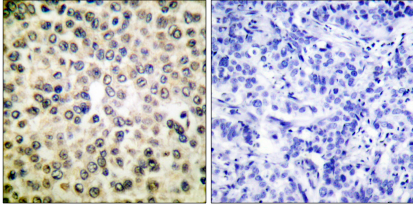
Size	50ul/100ul
Species Reactivity	Human, Mouse, Rat
Application	WB; IHC-p; IF(paraffin section); ELISA
Host/Isotype	Rabbit / IgG
Class	Polyclonal
Type	Antibody
Conjugate	Unconjugated
Immunogen	The antiserum was produced against synthesized peptide derived from human NF-kappaB p65. AA range:275-324
Form	Liquid
Concentration	1 mg/mL
Purification	The antibody was affinity-purified from rabbit antiserum by affinity-chromatography using epitope-specific immunogen.
Storage buffer	PBS
Contains	50% glycerol, 0.5% BSA and 0.02% sodium azide.
Storage conditions	-20°C

Applications	Tested Dilution	Publications
Western Blot (WB)	1:500 - 1:2000	-
Immunohistochemistry (IHC)	1:100 - 1:300	-
Immunocytochemistry (ICC/IF)	-	-
ELISA (ELISA)	-	-

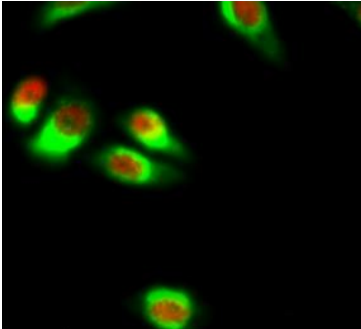
## Product Images For NFkB p65 Polyclonal Antibody



Western Blot analysis of MOUSE-BRAIN cells using NFkB-p65 Polyclonal Antibody diluted at 1:2000



Immunohistochemistry analysis of paraffin-embedded human breast carcinoma tissue, using NF-kappaB p65 Antibody. The picture on the right is blocked with the synthesized peptide.



Immunofluorescence analysis of HeLa cell. 1NFkB-p65 Polyclonal Antibody(red) was diluted at 1:200(4 overnight).Bc-2 Monoclonal Antibody(6B5)(green) was diluted at1:200(4°overnight). 2, Goat Anti Rabbit Alexa Fluor 594ataloa:RS3611 was diluted at 1:1000(room temperature.50min). Goat Anti Mouse Alexa Fluor 488 Catalog:RS3208 wasdiluted at 1:1000(room temperature, 50min).

---

For Research Use Only. Not for use in diagnostic procedures. Not for resale without express authorization. Products are warranted to operate or perform substantially in conformance with published Product specifications in effect at the time of sale, as set forth in the Production documentation, specifications and/or accompanying package inserts ("Documentation"). No claim of suitability for use in applications regulated by FDA is made. The warranty provided herein is valid only when used by properly trained individuals. Unless otherwise stated in the Documentation, this warranty is limited to one year from date of shipment when the Product is subjected to normal, proper and intended usage. This warranty does not extend to anyone other than the Buyer. Any model or sample furnished to Buyer is merely illustrative of the general type and quality of goods and does not represent that any Product will conform to such model or sample. NO OTHER WARRANTIES, EXPRESS OR IMPLIED, ARE GRANTED INCLUDING WITHOUT LIMITATION, IMPLIED WARRANTIES OF MERCHANTABILITY, FITNESS FOR ANY PARTICULAR PURPOSE, OR NON INFRINGEMENT. BUYER'S EXCLUSIVE REMEDY FOR NON-CONFORMING PRODUCTS DURING THE WARRANTY PERIOD IS LIMITED TO REPAIR, REPLACEMENT OF OR REFUND FOR THE NON-CONFORMING PRODUCT(S) AT SELLER'S SOLE OPTION. THERE IS NO OBLIGATION TO REPAIR, REPLACE OR REFUND FOR PRODUCTS AS THE RESULT OF (I) ACCIDENT, DISASTER OR EVENT OF FORCE MAJEURE, (II) MISUSE, FAULT OR NEGLIGENCE OF OR BY BUYER, (III) USE OF THE PRODUCTS IN A MANNER FOR WHICH THEY WERE NOT DESIGNED, OR (IV) IMPROPER STORAGE AND HANDLING OF THE PRODUCTS. Unless otherwise expressly stated on the Product or in the documentation accompanying the Product, the Product is intended for research only and is not to be used for any other purpose, including without limitation, unauthorized commercial uses, in vitro diagnostic uses, ex vivo or in vivo therapeutic uses, or any type of consumption by or application to human or animals.IPB15000