

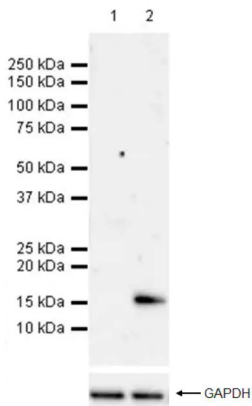
Histone H3 (citrulline R2 + R8 + R17) Rabbit Polyclonal Antibody

Product Details

Size	50ul/100ul
Species Reactivity	Human, Mouse, Rat
Host/Isotype	Rabbit / IgG
Class	Polyclonal
Type	Antibody
Conjugate	Unconjugated
Immunogen	Synthetic peptide corresponding to the carboxy-terminal sequence of human histone H3
Form	Liquid
Concentration	1mg/mL
Purification	Antigen affinity chromatography
Storage buffer	PBS
Contains	50% glycerol, and 0.227% sodium azide
Storage conditions	-20°C

Applications	Tested Dilution	Publications
Western Blot (WB)	1:1,000-1:5,000	-
Immunohistochemistry (IHC)	Assay-dependent	-
Immunocytochemistry (ICC/IF)	1:250	-

Product Images For Histone H3 (citrulline R2 + R8 + R17) Polyclonal Antibody



Western blot - Anti-Histone H3 (citrulline R2 + R8 + R17) antibody
 All lanes : Anti-Histone H3 (citrulline R2 + R8 + R17) antibody at 1/1000 dilution
 Lane 1 : Untreated C6 (rat glial tumor glial cell) transfected with PADI4 expression vector containing a GFP-tag, whole cell lysate
 Lane 2 : C6 transfected with PADI4 expression vector containing a GFP-tag treated with 10 mM calcium chloride and 10 μM Ionomycin for 2 hours, whole cell lysate
 Lysates/proteins at 20 μg per lane.
 Secondary
 All lanes : Goat Anti-Rabbit IgG H&L (HRP) at 1/100000 dilution (Goat Anti-Rabbit IgG, (H+L), Peroxidase conjugated)
 Predicted band size: 15 kDa

For Research Use Only. Not for use in diagnostic procedures. Not for resale without express authorization. Products are warranted to operate or perform substantially in conformance with published Product specifications in effect at the time of sale, as set forth in the Production documentation, specifications and/or accompanying package inserts ("Documentation"). No claim of suitability for use in applications regulated by FDA is made. The warranty provided herein is valid only when used by properly trained individuals. Unless otherwise stated in the Documentation, this warranty is limited to one year from date of shipment when the Product is subjected to normal, proper and intended usage. This warranty does not extend to anyone other than the Buyer. Any model or sample furnished to Buyer is merely illustrative of the general type and quality of goods and does not represent that any Product will conform to such model or sample. NO OTHER WARRANTIES, EXPRESS OR IMPLIED, ARE GRANTED INCLUDING WITHOUT LIMITATION, IMPLIED WARRANTIES OF MERCHANTABILITY, FITNESS FOR ANY PARTICULAR PURPOSE, OR NON INFRINGEMENT. BUYER'S EXCLUSIVE REMEDY FOR NON-CONFORMING PRODUCTS DURING THE WARRANTY PERIOD IS LIMITED TO REPAIR, REPLACEMENT OF OR REFUND FOR THE NON-CONFORMING PRODUCT(S) AT SELLER'S SOLE OPTION. THERE IS NO OBLIGATION TO REPAIR, REPLACE OR REFUND FOR PRODUCTS AS THE RESULT OF (I) ACCIDENT, DISASTER OR EVENT OF FORCE MAJEURE, (II) MISUSE, FAULT OR NEGLIGENCE OF OR BY BUYER, (III) USE OF THE PRODUCTS IN A MANNER FOR WHICH THEY WERE NOT DESIGNED, OR (IV) IMPROPER STORAGE AND HANDLING OF THE PRODUCTS. Unless otherwise expressly stated on the Product or in the documentation accompanying the Product, the Product is intended for research only and is not to be used for any other purpose, including without limitation, unauthorized commercial uses, in vitro diagnostic uses, ex vivo or in vivo therapeutic uses, or any type of consumption by or application to human or animals. Rev: IPB14447