

# Purified anti- $\beta$ -Amyloid, x-42 Antibody

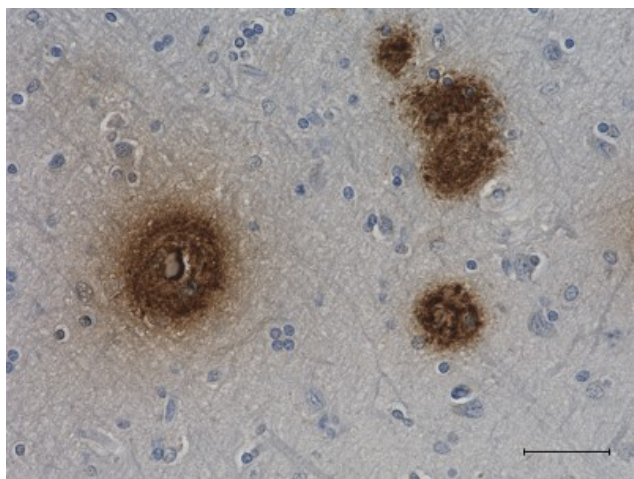
Product Details	
Size	50 ul
Species Reactivity	Human
Published Species	Non-human primate, Mouse, Human
Host/Isotype	Rabbit / IgG
Class	Monoclonal
Type	Antibody
Conjugate	Unconjugated
Other Names	Amyloid beta A4 protein, preA4, protease nexin-II, peptidase nexin-II, beta-amyloid peptide, alzheimer disease amyloid protein, cerebral vascular amyloid peptide, APP, Amyloid Precursor Protein
Form	Liquid
Concentration	0.5 mg/mL
Purification	Antigen affinity chromatography
Storage buffer	PBS, pH 7.4
Contains	no preservative
Storage & Handling	The antibody solution should be stored undiluted between 2°C and 8°C. Please note the storage condition for this antibody has been changed from -20°C to between 2°C and 8°C. You can also check your vial or your CoA to find the most accurate storage condition for this antibody.
Description	Alzheimer's disease is characterized by the accumulation of aggregated A $\beta$ peptides in senile plaques and vascular deposits. A $\beta$ peptides are derived from amyloid precursor protein (APP) through sequential proteolytic cleavage of APP by $\beta$ - and $\gamma$ -secretases generating diverse A $\beta$ species. A $\beta$ can aggregate to form soluble oligomeric species and insoluble fibrillar or amorphous assemblies. Some forms of the aggregated peptides are toxic to neurons.
Recommended Usage	Each lot of this antibody is quality control tested by formalin-fixed paraffin-embedded immunohistochemical staining. For immunohistochemistry, a concentration range of 5.0 - 10 $\mu$ g/ml is suggested. It is recommended that the reagent be titrated for optimal performance for each application.
Structure	Expected MW: 4 kD
Distribution	Tissue distribution: Primarily nervous system, but also adipose tissue, intestine, muscle. Cellular distribution: Cytosol, endosomes, nucleus, plasma membrane, extracellular, and golgi apparatus.
Function	The normal function of A $\beta$ is not well understood. Several potential physiological roles have been proposed, including: activation of kinase enzymes; protection against oxidative stress; regulation of cholesterol transport; transcription factor, and as an anti-microbial agent.
Biology Area	Cell Biology, Neurodegeneration, Neuroscience, Protein Misfolding and Aggregation
Molecular Family	APP/ $\beta$ -Amyloid
Application Notes	This antibody is effective in immunohistochemistry (IHC-P) and immunoblotting (WB).  This antibody is reactive to the C-terminus of beta amyloid and specific for the isoform that ends at the 42nd amino acid.

Applications	Tested Dilution	Publications
Western Blot (WB)	-	
Immunohistochemistry (IHC)	Assay-dependent	

## Other Formats

Biotin anti- $\beta$ -Amyloid, x-42, Purified anti- $\beta$ -Amyloid, x-42

## Product Data



IHC staining of purified anti- $\beta$ -Amyloid, x-42 antibody (clone 1-11-3) on formalin-fixed paraffin-embedded human Alzheimer's disease brain tissue. Following antigen retrieval using 70% formic acid for 20 minutes at room temperature, the tissue was incubated with 5  $\mu$ g/ml of the primary antibody overnight at 4°C. ReportBio's Ultra-Streptavidin HRP kit was used for detection followed by hematoxylin counterstaining, according to the protocol provided. The image was captured with a 40X objective. Scale bar: 50  $\mu$ m

For Research Use Only. Not for use in diagnostic procedures. Not for resale without express authorization. Products are warranted to operate or perform substantially in conformance with published Product specifications in effect at the time of sale, as set forth in the Production documentation, specifications and/or accompanying package inserts ("Documentation"). No claim of suitability for use in applications regulated by FDA is made. The warranty provided herein is valid only when used by properly trained individuals. Unless otherwise stated in the Documentation, this warranty is limited to one year from date of shipment when the Product is subjected to normal, proper and intended usage. This warranty does not extend to anyone other than the Buyer. Any model or sample furnished to Buyer is merely illustrative of the general type and quality of goods and does not represent that any Product will conform to such model or sample. NO OTHER WARRANTIES, EXPRESS OR IMPLIED, ARE GRANTED INCLUDING WITHOUT LIMITATION, IMPLIED WARRANTIES OF MERCHANTABILITY, FITNESS FOR ANY PARTICULAR PURPOSE, OR NON-INFRINGEMENT. BUYER'S EXCLUSIVE REMEDY FOR NON-CONFORMING PRODUCTS DURING THE WARRANTY PERIOD IS LIMITED TO REPAIR, REPLACEMENT OF OR REFUND FOR THE NON-CONFORMING PRODUCT(S) AT SELLER'S SOLE OPTION. THERE IS NO OBLIGATION TO REPAIR, REPLACE OR REFUND FOR PRODUCTS AS THE RESULT OF (I) ACCIDENT, DISASTER OR EVENT OF FORCE MAJEURE, (II) MISUSE, FAULT OR NEGLIGENCE OF OR BY BUYER, (III) USE OF THE PRODUCTS IN A MANNER FOR WHICH THEY WERE NOT DESIGNED, OR (IV) IMPROPER STORAGE AND HANDLING OF THE PRODUCTS. Unless otherwise expressly stated on the Product or in the documentation accompanying the Product, the Product is intended for research only and is not to be used for any other purpose, including without limitation, unauthorized commercial uses, in vitro diagnostic uses, ex vivo or in vivo therapeutic uses, or any type of consumption by or application to human or animals.

*Note: the product information may be optimized and upgraded. Please refer to the actual label information.*