

SLC40A1 Polyclonal Antibody

Product Details

Size	50ul/100ul
Species Reactivity	Human, Mouse, Rat
Application	WB, IHC, IF, FCM, ELISA
Host/Isotype	Rabbit / IgG
Class	Polyclonal
Type	Antibody
Conjugate	Unconjugated
Immunogen	E.coli-derived human SLC40A1 recombinant protein (Position: M1-V571).
Form	Liquid
Concentration	1 mg/mL
Purification	Antigen affinity chromatography
Storage buffer	PBS
Contains	0.02% sodium azide
Storage conditions	Store at 4°C short term. For long term storage, store at -20°C, avoiding freeze/thaw cycles.

Applications	Tested Dilution	Publications
Western Blot (WB)	1:500-2000	-
Immunohistochemistry (IHC)	1:50-400	-
Immunocytochemistry (ICC/IF)	1:50-400	-
Flow Cytometry (Flow)	1-3 µg/1x10 ⁶ cells	-

Product Specific Information

Suggested positive control: human intestine protein.

Product Images For SLC40A1 Polyclonal Antibody

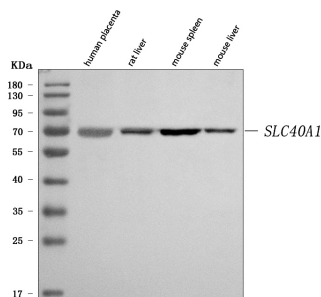


Figure 1. Western blot analysis of anti- SLC40A1 antibody (RA1112). The sample well of each lane was loaded with 30ug of sample under reducing conditions.

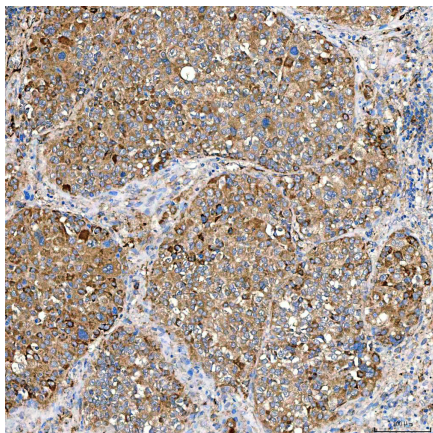
Lane 1: human placenta tissue lysates,

Lane 2: rat liver tissue lysates,

Lane 3: mouse spleen tissue lysates,

Lane 4: mouse liver tissue lysates.

Use rabbit anti- SLC40A1 1:1000, probed with a goat anti-rabbit IgG-HRP secondary antibody. The signal is developed using an Enhanced Chemiluminescent detection (ECL) kit .



IHC analysis using anti- SLC40A1 antibody (RA1112). detected in paraffin-embedded section of human liver cancer tissue. Peroxidase Conjugated goat anti-rabbit IgG was used as secondary antibody. The tissue section was developed using HRP Conjugated Rabbit IgG Super Vision Assay Kit with DAB as the chromogen.

For Research Use Only. Not for use in diagnostic procedures. Not for resale without express authorization. Products are warranted to operate or perform substantially in conformance with published Product specifications in effect at the time of sale, as set forth in the Production documentation, specifications and/or accompanying package inserts ("Documentation"). No claim of suitability for use in applications regulated by FDA is made. The warranty provided herein is valid only when used by properly trained individuals. Unless otherwise stated in the Documentation, this warranty is limited to one year from date of shipment when the Product is subjected to normal, proper and intended usage. This warranty does not extend to anyone other than the Buyer. Any model or sample furnished to Buyer is merely illustrative of the general type and quality of goods and does not represent that any Product will conform to such model or sample. NO OTHER WARRANTIES, EXPRESS OR IMPLIED, ARE GRANTED INCLUDING WITHOUT LIMITATION, IMPLIED WARRANTIES OF MERCHANTABILITY, FITNESS FOR ANY PARTICULAR PURPOSE, OR NON INFRINGEMENT. BUYER'S EXCLUSIVE REMEDY FOR NON-CONFORMING PRODUCTS DURING THE WARRANTY PERIOD IS LIMITED TO REPAIR, REPLACEMENT OF OR REFUND FOR THE NON-CONFORMING PRODUCT(S) AT SELLER'S SOLE OPTION. THERE IS NO OBLIGATION TO REPAIR, REPLACE OR REFUND FOR PRODUCTS AS THE RESULT OF (I) ACCIDENT, DISASTER OR EVENT OF FORCE MAJEURE, (II) MISUSE, FAULT OR NEGLIGENCE OF OR BY BUYER, (III) USE OF THE PRODUCTS IN A MANNER FOR WHICH THEY WERE NOT DESIGNED, OR (IV) IMPROPER STORAGE AND HANDLING OF THE PRODUCTS. Unless otherwise expressly stated on the Product or in the documentation accompanying the Product, the Product is intended for research only and is not to be used for any other purpose, including without limitation, unauthorized commercial uses, in vitro diagnostic uses, ex vivo or in vivo therapeutic uses, or any type of consumption by or application to human or animals.