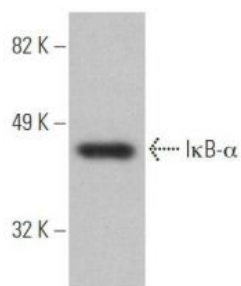


# beta Actin Mouse Monoclonal Antibody

Product Details	
Size	50ul/100 ul
Species Reactivity	Human, Mouse, Rat, Zebrafish, Yeast, Rabbit, Goat, Drosophila, Cat, Dog, Monkey, Xenopus
Application	WB, ICC/IF, IHC-P, IP
Host/Isotype	Mouse / IgG1
Class	Monoclonal
Type	Antibody
Conjugate	Unconjugated
Immunogen	Carrier-protein conjugated synthetic peptide encompassing a sequence within the C-terminus region of human beta Actin. The exact sequence is proprietary.
Form	Liquid
Concentration	1 mg/mL
Purification	Affinity purified by Protein G.
Storage buffer	PBS with 1mg/mL BSA, 30% glycerol
Contains	0.05% sodium azide
Storage conditions	Store at 4°C short term. For long term storage, store at -20°C, avoiding freeze/thaw cycles.
RRID	AB_2536844

Applications	Tested Dilution	Publications
Western Blot (WB)	1:500-1:10000	-
Immunohistochemistry (IHC)	1:100-1:1000	-
Immunocytochemistry (ICC/IF)	1:200-1:1000	-
Immunoprecipitation (IP)	-	-

## Product Images For beta Actin Monoclonal Antibody



### RA1044 WB Image

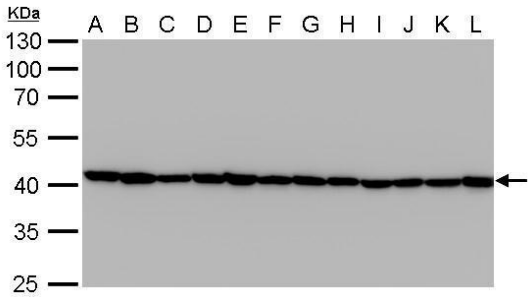
Beta Actin antibody detects beta Actin protein by western blot analysis.

A. 30 µg drosophila lysate/extract

10% SDS-PAGE

Beta Actin antibody (RA1044) dilution: 1:1000

The HRP-conjugated anti-mouse IgG antibody was used to detect the primary antibody.



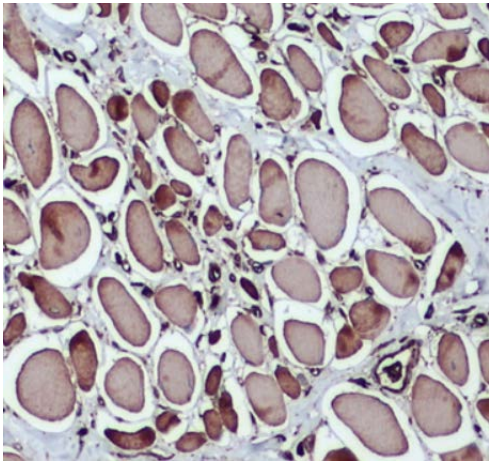
**RA1044 WB Image**

Beta Actin antibody detects beta Actin protein by western blot analysis.

- A. 30 µg Jurkat whole cell lysate/extract
- B. 30 µg Raji whole cell lysate/extract
- C. 30 µg 293T whole cell lysate/extract
- D. 30 µg A431 whole cell lysate/extract
- E. 30 µg HeLa whole cell lysate/extract
- F. 30 µg HepG2 whole cell lysate/extract
- G. 30 µg H1299 whole cell lysate/extract
- H. 30 µg HCT116 whole cell lysate/extract
- I. 30 µg MCF-7 whole cell lysate/extract
- J. 30 µg NT2D1 whole cell lysate/extract
- K. 30 µg PC-3 whole cell lysate/extract
- L. 30 µg U87-MG whole cell lysate/extract

10% SDS-PAGE

Beta Actin antibody (RA1044) dilution: 1:20000



**RA1044 IHC-P Image**

beta Actin antibody detects beta Actin protein at cytoplasm by immunohistochemical analysis.

Sample: Paraffin-embedded dog muscle.

beta Actin stained by beta Actin antibody (RA1044) diluted at 1:200.

Antigen Retrieval: Citrate buffer, pH 6.0, 15 min

For Research Use Only. Not for use in diagnostic procedures. Not for resale without express authorization. Products are warranted to operate or perform substantially in conformance with published Product specifications in effect at the time of sale, as set forth in the Production documentation, specifications and/or accompanying package inserts ("Documentation"). No claim of suitability for use in applications regulated by FDA is made. The warranty provided herein is valid only when used by properly trained individuals. Unless otherwise stated in the Documentation, this warranty is limited to one year from date of shipment when the Product is subjected to normal, proper and intended usage. This warranty does not extend to anyone other than the Buyer. Any model or sample furnished to Buyer is merely illustrative of the general type and quality of goods and does not represent that any Product will conform to such model or sample. NO OTHER WARRANTIES, EXPRESS OR IMPLIED, ARE GRANTED INCLUDING WITHOUT LIMITATION, IMPLIED WARRANTIES OF MERCHANTABILITY, FITNESS FOR ANY PARTICULAR PURPOSE, OR NON-INFRINGEMENT. BUYER'S EXCLUSIVE REMEDY FOR NON-CONFORMING PRODUCTS DURING THE WARRANTY PERIOD IS LIMITED TO REPAIR, REPLACEMENT OF OR REFUND FOR THE NON-CONFORMING PRODUCT(S) AT SELLER'S SOLE OPTION. THERE IS NO OBLIGATION TO REPAIR, REPLACE OR REFUND FOR PRODUCTS AS THE RESULT OF (I) ACCIDENT, DISASTER OR EVENT OF FORCE MAJEURE, (II) MISUSE, FAULT OR NEGLIGENCE OF OR BY BUYER, (III) USE OF THE PRODUCTS IN A MANNER FOR WHICH THEY WERE NOT DESIGNED, OR (IV) IMPROPER STORAGE AND HANDLING OF THE PRODUCTS. Unless otherwise expressly stated on the Product or in the documentation accompanying the Product, the Product is intended for research only and is not to be used for any other purpose, including without limitation, unauthorized commercial uses, in vitro diagnostic uses, ex vivo or in vivo therapeutic uses, or any type of consumption by or application to human or animals. RV:GT5512-2022