

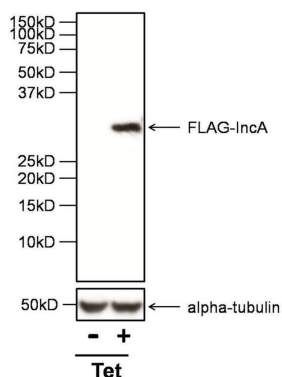
DYKDDDDK Tag Monoclonal Antibody

Product Details

| | |
|--------------------|--|
| Size | 100 µg |
| Species Reactivity | Tag |
| Published Species | Tag |
| Host/Isotype | Mouse / IgG2a κ |
| Class | Monoclonal |
| Type | Antibody |
| Clone | FG4R |
| Conjugate | Unconjugated |
| Immunogen | KLH conjugated DYKDDDDK peptide |
| Form | Liquid |
| Concentration | 1 mg/mL |
| Purification | Protein A |
| Storage buffer | PBS containing 50% Glycerol (pH 7.2). No preservative is contained. |
| Contains | no preservative |
| Storage conditions | Store at 4°C short term. For long term storage, store at -20°C, avoiding freeze/thaw cycles. |

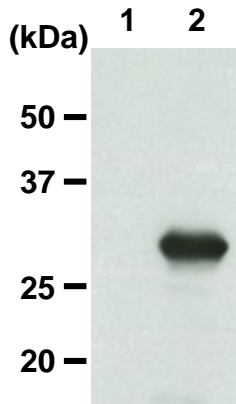
| Applications | Tested Dilution | Publications |
|------------------------------|-----------------|--------------|
| Western Blot (WB) | 1:500-1:1,000 | - |
| Immunohistochemistry (IHC) | - | - |
| Immunocytochemistry (ICC/IF) | 1:200-1:500 | - |
| Immunoprecipitation (IP) | - | - |

Product Images For DYKDDDDK Tag Monoclonal Antibody



DYKDDDDK Tag Antibody (RA1043) in WB

Western blot analysis of *Chlamydia trachomatis* FLAG[®]-IncA was performed by loading 30 µg of whole cell lysates from HeLa cells infected with a strain of *Chlamydia trachomatis* expressing FLAG-IncA under the control of a Tetracycline promoter (Tet), and either left untreated (-) or treated with anhydrotetracycline (+), onto an SDS-PAGE gel. Proteins were transferred to a PVDF membrane and blocked with 5% milk in TBST for 1 hour at room temperature. The membrane was probed with a FLAG Epitope Tag (DYKDDDDK) monoclonal antibody (Product # RA1043) at a dilution of 1:500 in 3% BSA in TBST overnight at 4C, washed in TBST, and then incubated with an HRP-conjugated sheep anti-mouse IgG secondary antibody at a dilution of 1:15,000 in 1% milk in TBST for 1 hour at room temperature .



Immunoprecipitation of DYKDDDDK-tagged GFP

Lane 1: IP with isotype control

Lane 2: IP with RA1043

Immunoblotted with Anti-DDDDK-tag HRP-Direct

For Research Use Only. Not for use in diagnostic procedures. Not for resale without express authorization. Products are warranted to operate or perform substantially in conformance with published Product specifications in effect at the time of sale, as set forth in the Production documentation, specifications and/or accompanying package inserts ("Documentation"). No claim of suitability for use in applications regulated by FDA is made. The warranty provided herein is valid only when used by properly trained individuals. Unless otherwise stated in the Documentation, this warranty is limited to one year from date of shipment when the Product is subjected to normal, proper and intended usage. This warranty does not extend to anyone other than the Buyer. Any model or sample furnished to Buyer is merely illustrative of the general type and quality of goods and does not represent that any Product will conform to such model or sample. NO OTHER WARRANTIES, EXPRESS OR IMPLIED, ARE GRANTED INCLUDING WITHOUT LIMITATION, IMPLIED WARRANTIES OF MERCHANTABILITY, FITNESS FOR ANY PARTICULAR PURPOSE, OR NON INFRINGEMENT. BUYER'S EXCLUSIVE REMEDY FOR NON-CONFORMING PRODUCTS DURING THE WARRANTY PERIOD IS LIMITED TO REPAIR, REPLACEMENT OF OR REFUND FOR THE NON-CONFORMING PRODUCT(S) AT SELLER'S SOLE OPTION. THERE IS NO OBLIGATION TO REPAIR, REPLACE OR REFUND FOR PRODUCTS AS THE RESULT OF (I) ACCIDENT, DISASTER OR EVENT OF FORCE MAJEURE, (II) MISUSE, FAULT OR NEGLIGENCE OF OR BY BUYER, (III) USE OF THE PRODUCTS IN A MANNER FOR WHICH THEY WERE NOT DESIGNED, OR (IV) IMPROPER STORAGE AND HANDLING OF THE PRODUCTS. Unless otherwise expressly stated on the Product or in the documentation accompanying the Product, the Product is intended for research only and is not to be used for any other purpose, including without limitation, unauthorized commercial uses, in vitro diagnostic uses, ex vivo or in vivo therapeutic uses, or any type of consumption by or application to human or animals.