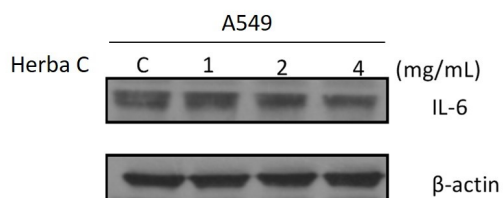


IL-6 Polyclonal Antibody

Product Details	
Size	50ul/100ul
Species Reactivity	Human, Mouse, Rat
Host/Isotype	Rabbit / IgG
Class	Polyclonal
Type	Antibody
Conjugate	Unconjugated
Immunogen	E.coli derived Recombinant Human IL-6. (PVPPGEDSKD VAAPHRQPLT SSERIDKQIR YILDGISALR KETCNKSNMC ESSKEALAEN NLNLPKMAEK DGCFSQGFNE ETCLVKIITG LLEFEVYLEY LQNRFESSEE QARAVQMSTK VLIQFLQKKA KNLDAITTPD PTTNASLLTK LQAQNQWLQD MTTHLILRSF KEFLQSSLRA LRQM)
Form	Liquid
Concentration	1.0 mg/mL
Purification	Protein A
Storage buffer	PBS
Contains	no preservative
Storage conditions	-20°C

Applications	Tested Dilution	Publications
Western Blot (WB)	1:500-1:3000	-
Immunocytochemistry (ICC/IF)	1:100-1:1000	-

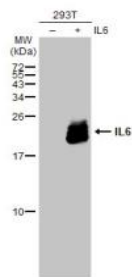
Images



RA1028 anti-IL6 antibody WB image

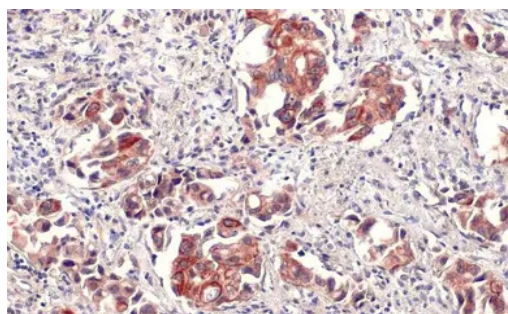
Western blot: 50 μ g of A549 untreated or treated with Herba C. The blots were stained with RA1028 anti-IL6 antibody at 1:2000 dilution.

Observed band MW: 25 kDa.



RA1028 WB Image

Non-transfected (-) and transfected (+) 293T whole cell extracts (30 µg) were separated by 12% SDS-PAGE, and the membrane was blotted with IL6 antibody (RA1028) diluted at 1:1500. The HRP-conjugated anti-rabbit IgG antibody was used to detect the primary antibody.



RA1028 IHC-P Image

IL6 antibody detects IL6 protein at cell membrane and cytoplasm by immunohistochemical analysis. Sample: Paraffin-embedded human lung cancer.

IL6 stained by IL6 antibody (RA1028) diluted at 1:500.

Antigen Retrieval: Citrate buffer, pH 6.0, 15 min

For Research Use Only. Not for use in diagnostic procedures. Not for resale without express authorization. Products are warranted to operate or perform substantially in conformance with published Product specifications in effect at the time of sale, as set forth in the Production documentation, specifications and/or accompanying package inserts ("Documentation"). No claim of suitability for use in applications regulated by FDA is made. The warranty provided herein is valid only when used by properly trained individuals. Unless otherwise stated in the Documentation, this warranty is limited to one year from date of shipment when the Product is subjected to normal, proper and intended usage. This warranty does not extend to anyone other than the Buyer. Any model or sample furnished to Buyer is merely illustrative of the general type and quality of goods and does not represent that any Product will conform to such model or sample. NO OTHER WARRANTIES, EXPRESS OR IMPLIED, ARE GRANTED INCLUDING WITHOUT LIMITATION, IMPLIED WARRANTIES OF MERCHANTABILITY, FITNESS FOR ANY PARTICULAR PURPOSE, OR NON INFRINGEMENT. BUYER'S EXCLUSIVE REMEDY FOR NON-CONFORMING PRODUCTS DURING THE WARRANTY PERIOD IS LIMITED TO REPAIR, REPLACEMENT OF OR REFUND FOR THE NON-CONFORMING PRODUCT(S) AT SELLER'S SOLE OPTION. THERE IS NO OBLIGATION TO REPAIR, REPLACE OR REFUND FOR PRODUCTS AS THE RESULT OF (I) ACCIDENT, DISASTER OR EVENT OF FORCE MAJEURE, (II) MISUSE, FAULT OR NEGLIGENCE OF OR BY BUYER, (III) USE OF THE PRODUCTS IN A MANNER FOR WHICH THEY WERE NOT DESIGNED, OR (IV) IMPROPER STORAGE AND HANDLING OF THE PRODUCTS. Unless otherwise expressly stated on the Product or in the documentation accompanying the Product, the Product is intended for research only and is not to be used for any other purpose, including without limitation, unauthorized commercial uses, in vitro diagnostic uses, ex vivo or in vivo therapeutic uses, or any type of consumption by or application to human or animals.

RV:EM1701-45