

# Anti-Beta Actin(ACTB) Rabbit Monoclonal Antibody



Code: RA1012

## Product Details

Size	100ul
Species Reactivity	Human, Mouse, Rat, Chicken, Zebrafish, Pig, Oryza sativa
Host/Isotype	Rabbit /IgG
Class	Mmonoclonal
Type	Antibody
Conjugate	Unconjugated
Immunogen	Recombinant protein of human $\beta$ -actin
Form	Liquid
Purification	Affinity purification
Storage buffer	PBS with 0.09% sodium azide,50% glycerol,pH7.3.
Contains	0.1% sodium azide
Storage conditions	-20° C, Avoid Freeze/Thaw Cycles
Swiss Prot	P60709

Applications	Tested Dilution	Publications
Western Blot (WB)	1:1000 - 1:2000	-
Immunohistochemistry (IHC)	1:200 - 1:500	-
Immunohistochemistry (Paraffin) (IHC (P))	-	-
Immunocytochemistry (ICC/IF)	-	-

## Images

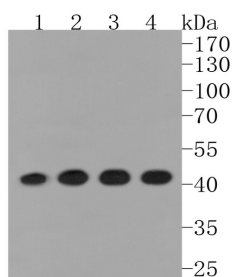
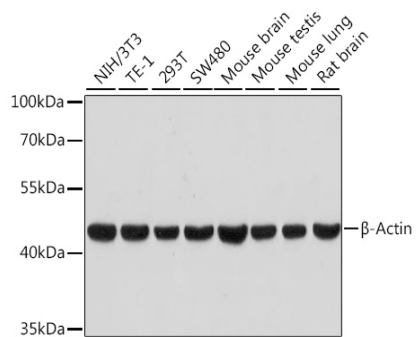
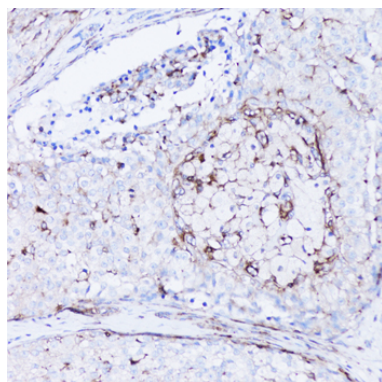


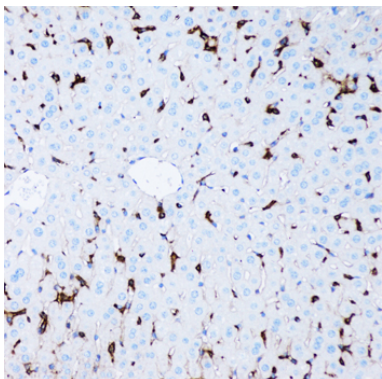
Fig1: Western blot analysis of Actin on different lysates. Proteins were transferred to a PVDF membrane and blocked with 5% BSA in PBS for 1 hour at room temperature. The primary antibody (RA1012, 1/500) was used in 5% BSA at room temperature for 2 hours. Goat Anti-Rabbit IgG - HRP Secondary Antibody (S1002) at 1:5,000 dilution was used for 1 hour at room temperature.  
Positive control:  
Lane 1: PC-12 cell lysate  
Lane 2: HeLa cell lysate  
Lane 3: A431 cell lysate  
Lane 4: zebrafish tissue lysate



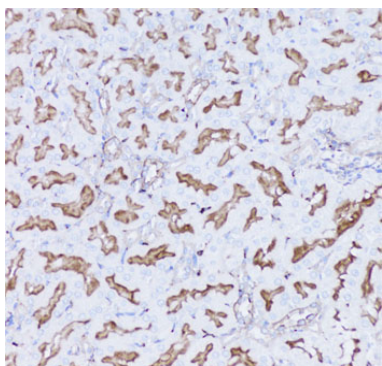
**Fig2:**Western blot analysis of extracts of various cell lines, using  $\beta$ -actin antibody (RA1012) at 1:1000 dilution. Secondary antibody: HRP Goat Anti-Rabbit IgG (H+L) (S1002) at 1:1000 dilution. Lysates/proteins: 25ug per lane. Blocking buffer: 3% nonfat dry milk in TBST. Detection: ECL Basic Kit (RW0601). Exposure time: 30s.



**Fig3:**Immunohistochemistry of paraffin-embedded human breast cancer using  $\beta$ -actin antibody (RA1012) at dilution of 1:100 (20x lens).



**Fig4:**Immunohistochemistry of paraffin-embedded mouse liver using  $\beta$ -actin antibody (RA1012) at dilution of 1:100 (20x lens).



**Fig5:**Immunohistochemistry of paraffin-embedded rat kidney using  $\beta$ -actin antibody (RA1012) at dilution of 1:100 (20x lens).

For Research Use Only. Not for use in diagnostic procedures. Not for resale without express authorization. Products are warranted to operate or perform substantially in conformance with published Product specifications in effect at the time of sale, as set forth in the Production documentation, specifications and/or accompanying package inserts ("Documentation"). No claim of suitability for use in applications regulated by FDA is made. The warranty provided herein is valid only when used by properly trained individuals. Unless otherwise stated in the Documentation, this warranty is limited to one year from date of shipment when the Product is subjected to normal, proper and intended usage. This warranty does not extend to anyone other than the Buyer. Any model or sample furnished to Buyer is merely illustrative of the general type and quality of goods and does not represent that any Product will conform to such model or sample. NO OTHER WARRANTIES, EXPRESS OR IMPLIED, ARE GRANTED INCLUDING WITHOUT LIMITATION, IMPLIED WARRANTIES OF MERCHANTABILITY, FITNESS FOR ANY PARTICULAR PURPOSE, OR NON INFRINGEMENT. BUYER'S EXCLUSIVE REMEDY FOR NON-CONFORMING PRODUCTS DURING THE WARRANTY PERIOD IS LIMITED TO REPAIR, REPLACEMENT OF OR REFUND FOR THE NON-CONFORMING PRODUCT(S) AT SELLER'S SOLE OPTION. THERE IS NO OBLIGATION TO REPAIR, REPLACE OR REFUND FOR PRODUCTS AS THE RESULT OF (I) ACCIDENT, DISASTER OR EVENT OF FORCE MAJEURE, (II) MISUSE, FAULT OR NEGLIGENCE OF OR BY BUYER, (III) USE OF THE PRODUCTS IN A MANNER FOR WHICH THEY WERE NOT DESIGNED, OR (IV) IMPROPER STORAGE AND HANDLING OF THE PRODUCTS. Unless otherwise expressly stated on the Product or in the documentation accompanying the Product, the Product is intended for research only and is not to be used for any other purpose, including without limitation, unauthorized commercial uses, in vitro diagnostic uses, ex vivo or in vivo therapeutic uses, or any type of consumption by or application to human or animals.

Re: 026X50