

Anti-alpha Tubulin Mouse Monoclonal Antibody

Code: RA1004

Product Details	
Size	50ul
Species Reactivity	Human, Mouse, Rat, Zebrafish, Drosophila
Host/Isotype	Mouse /IgG2a
Class	Mmonoclonal
Type	Primary antibodies
Conjugate	Unconjugated
Immunogen	Synthetic peptide (KLH-coupled) within human Beta-actin N terminal.
Form	Liquid
Purification	Protein A affinity purified
Storage buffer	1XPBS (pH7), 20% Glycerol
Storage conditions	Store as concentrated solution. Centrifuge briefly prior to opening vial. For short-term storage (1-2 weeks), store at 4°C. For long-term storage, aliquot and store at -20°C or below. Avoid multiple freeze-thaw cycles.
Positive control:	NIH/3T3 cell lysate, PC-12 cell lysate, MCF-7 cell lysate, HepG2 cell lysate, Hela cell lysate, mouse lung tissue lysate, Hela, A549, NIH/3T3, human colon carcinoma tissue, mouse prostate tissue, mouse kidney tissue.
RRID:	AB_2716636

Applications	Tested Dilution	Publications
WB	1:500-1:20000	-
ICC/IF	1:100-1:1000	-
IHC-P	1:100-1:1000	-
IHC-Fr	1:100-1:1000	-

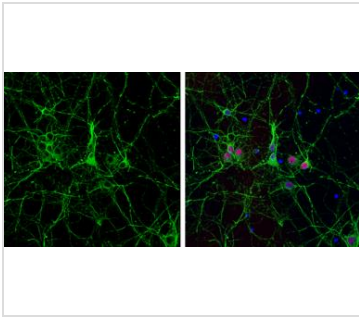


Fig1:

alpha Tubulin antibody detects alpha Tubulin protein expression by immunofluorescent analysis. Sample: Cultured rat E18 primary cortical neuron, DIV 8. Cells were fixed in 4% paraformaldehyde at RT for 15 min. Green: alpha Tubulin protein stained by alpha Tubulin antibody (RA1004) diluted at 1:250. Red: NeuN, stained by NeuN antibody diluted at 1:250. Blue: Fluoroshield with DAPI (RP8961).

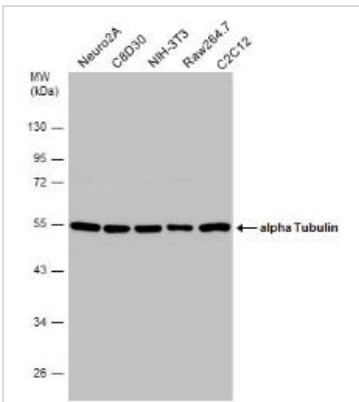


Fig2:

Various whole cell extracts (30 μ g) were separated by 10% SDS-PAGE, and the membrane was blotted with alpha Tubulin antibody (RA1004) diluted at 1:10000. The HRP-conjugated anti-mouse IgG antibody (S1001) was used to detect the primary antibody.

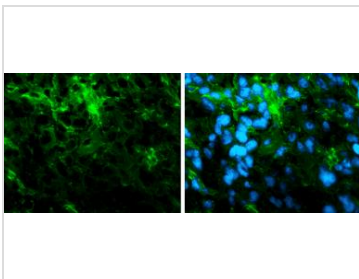


Fig3:

Immunofluorescence photomicrographs of frozen sections of mouse brain. Green: alpha Tubulin antibody (RA1004) diluted at 1:200. The signal was developed using goat anti-mouse IgG antibody (Dylight488) (S6001). Blue: Nuclear staining with Hoechst 33342.

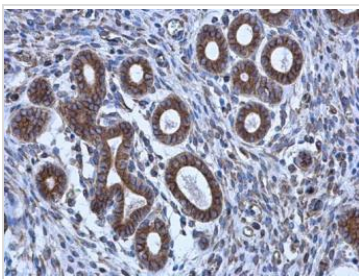


Fig4:

alpha Tubulin antibody detects alpha Tubulin protein at cytoplasm in human cervix by immunohistochemical analysis. Sample: Paraffin-embedded human cervix. alpha Tubulin antibody (RA1004) diluted at 1:500. Antigen Retrieval: Citrate buffer, pH 6.0, 15 min

For Research Use Only. Not for use in diagnostic procedures. Not for resale without express authorization. Products are warranted to operate or perform substantially in conformance with published Product specifications in effect at the time of sale, as set forth in the Production documentation, specifications and/or accompanying package inserts ("Documentation"). No claim of suitability for use in applications regulated by FDA is made. The warranty provided herein is valid only when used by properly trained individuals. Unless otherwise stated in the Documentation, this warranty is limited to one year from date of shipment when the Product is subjected to normal, proper and intended usage. This warranty does not extend to anyone other than the Buyer. Any model or sample furnished to Buyer is merely illustrative of the general type and quality of goods and does not represent that any Product will conform to such model or sample. NO OTHER WARRANTIES, EXPRESS OR IMPLIED, ARE GRANTED INCLUDING WITHOUT LIMITATION, IMPLIED WARRANTIES OF MERCHANTABILITY, FITNESS FOR ANY PARTICULAR PURPOSE, OR NON-INFRINGEMENT. BUYER'S EXCLUSIVE REMEDY FOR NON-CONFORMING PRODUCTS DURING THE WARRANTY PERIOD IS LIMITED TO REPAIR, REPLACEMENT OF OR REFUND FOR THE NON-CONFORMING PRODUCT(S) AT SELLER'S SOLE OPTION. THERE IS NO OBLIGATION TO REPAIR, REPLACE OR REFUND FOR PRODUCTS AS THE RESULT OF (I) ACCIDENT, DISASTER OR EVENT OF FORCE MAJEURE, (II) MISUSE, FAULT OR NEGLIGENCE OF OR BY BUYER, (III) USE OF THE PRODUCTS IN A MANNER FOR WHICH THEY WERE NOT DESIGNED, OR (IV) IMPROPER STORAGE AND HANDLING OF THE PRODUCTS. Unless otherwise expressly stated on the Product or in the documentation accompanying the Product, the Product is intended for research only and is not to be used for any other purpose, including without limitation, unauthorized commercial uses, in vitro diagnostic uses, ex vivo or in vivo therapeutic uses, or any type of consumption by or application to human or animals.